

INSIDE THE CIRCLE: A PROVEN METHOD FOR A SUCCESSFUL MARCHING BAND

FULL ENSEMBLE CHAPTER: TENOR SAXOPHONE PART

by Matt and Ben Harloff

Tuning Chart

Materials: Instrument, tuner and patience.

Tuning Steps:

Step 1: Tune your fundamental pitch to get the instrument in tune. For Alto Sax: F# top of the staff, D on the staff and B on the staff. For Tenor Sax: B on the staff, C on the staff and G on the staff.

Step 2: Tune the note at a piano dynamic. Write down how many cents out of tune.

Step 3: Tune the note at a mezzo forte. Write down how many cents out of tune.

Step 4: Tune the note at a fortissimo. Write down how many cents out of tune.

Step 5: Experiment how to fix the intonation. Write down ways to place the note in tune.

Repeat Steps 2 through 4 all the way to the highest pitch.

***Ways to adjust tuning: Firm-up Embouchure. Loosen Embouchure. Alternate Fingering.

Tips:

*Start the chart with the lowest note.

*When tuning each note, do not adjust the pitch to play in tune. Play the note as natural as possible.

This way you will be receiving your most accurate tendency on each pitch.

*Each dynamic may have a different pitch tendency. Be patient with each dynamic to get the most accurate tendency.

*Write +13 if you are sharp 13 cents. Write -10 if you are flat 10 cents. Write 0 if you are in tune.

*Fix?: On the "Fix?" line write down what you need to do to adjust the pitch and play it in tune. You may want to fill out the entire chart come back later to fill in the "Fix?" line.

*This sheet may take some time. You may have to complete the full chart in a couple of practice sessions.

First row of the tuning chart. It consists of a treble clef staff with a 4/4 time signature. The first measure contains a whole note with a sharp sign (F#). The second measure contains a whole note with a flat sign (Bb). The third measure contains a whole note (C). The fourth measure contains a whole note with a sharp sign (F#). Below each note are three dynamic markings: p, mf, and ff, each followed by a blank line. Below each measure is a line labeled "Fix?" followed by a blank line for notes.

Second row of the tuning chart. It consists of a treble clef staff with a 4/4 time signature. The first measure contains a whole note with a sharp sign (F#). The second measure contains a whole note with a flat sign (Bb). The third measure contains a whole note (C). The fourth measure contains a whole note with a sharp sign (F#). The fifth measure contains a whole note with a flat sign (Bb). Below each note are three dynamic markings: p, mf, and ff, each followed by a blank line. Below each measure is a line labeled "Fix?" followed by a blank line for notes.

Third row of the tuning chart. It consists of a treble clef staff with a 4/4 time signature. The first measure contains a whole note (C). The second measure contains a whole note (C). The third measure contains a whole note with a sharp sign (F#). The fourth measure contains a whole note with a flat sign (Bb). Below each note are three dynamic markings: p, mf, and ff, each followed by a blank line. Below each measure is a line labeled "Fix?" followed by a blank line for notes.

INSIDE THE CIRCLE: A PROVEN METHOD FOR A SUCCESSFUL MARCHING BAND

FULL ENSEMBLE CHAPTER: TENOR SAXOPHONE PART

by Matt and Ben Harloff

Tuning Chart



p__ mf__ ff__

p__ mf__ ff__

p__ mf__ ff__

Fix?_____

Fix?_____

Fix?_____



p__ mf__ ff__

p__ mf__ ff__

p__ mf__ ff__

p__ mf__ ff__

Fix?_____

Fix?_____

Fix?_____

Fix?_____



p__ mf__ ff__

p__ mf__ ff__

p__ mf__ ff__

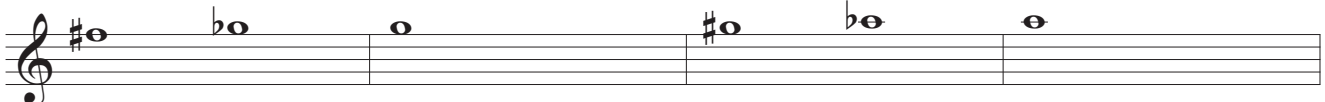
p__ mf__ ff__

Fix?_____

Fix?_____

Fix?_____

Fix?_____



p__ mf__ ff__

p__ mf__ ff__

p__ mf__ ff__

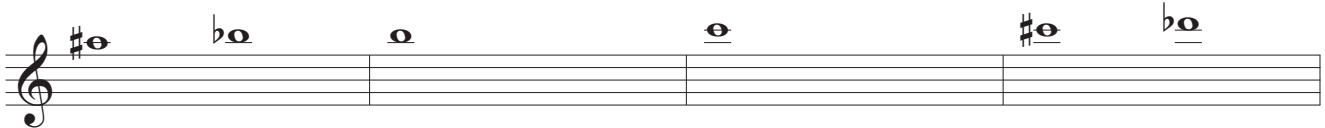
p__ mf__ ff__

Fix?_____

Fix?_____

Fix?_____

Fix?_____



p__ mf__ ff__

p__ mf__ ff__

p__ mf__ ff__

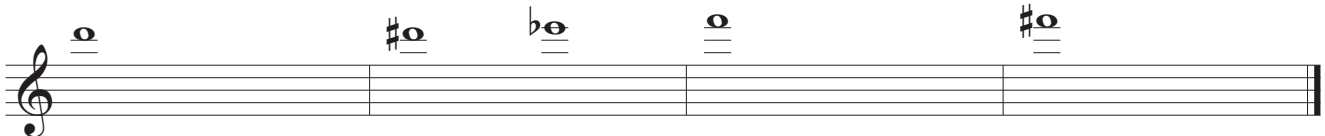
p__ mf__ ff__

Fix?_____

Fix?_____

Fix?_____

Fix?_____



p__ mf__ ff__

p__ mf__ ff__

p__ mf__ ff__

p__ mf__ ff__

Fix?_____

Fix?_____

Fix?_____

Fix?_____