

LASA Raptor Band Audition Instructions - Brasses

Begin your video by introducing yourself and letting us know what school you currently attend. As you go through each exercise, please say which scales or exercise you will be playing before you play it.

*****Please record each of these with an audible metronome*****

Page 1 - Major Scales

Perform three major scales of your choosing. Tempo = 120 or faster

Page 2 - Range Based Flexibility Exercises

Perform the highest level (1, 2, or 3) exercise that you can perform successfully. Tempo = 72-96

Page 3 - Brass Flexibility Exercises

Perform one of the exercises of your choosing. The further down the page, the more complicated the exercise. Tempo = 120

Page 4 - Articulation Pattern

Perform the two lines at the fastest tempo that can cleanly single tongue. Announce the tempo that you are performing at before beginning.

Page 5 - Theme and Variations

Perform the highest numbered variation that you can perform cleanly. Tempo = 80+

OPTIONAL - You may also record an additional solo or etude that you have been working on at the end of your video. This part may be without a metronome.

Tuba

12 Major Scales

One Octave

F Major

Bb Major

Musical notation for F Major and Bb Major scales in bass clef, 4/4 time. F Major starts on F2, Bb Major starts on Bb2. Both are one octave ascending and descending.

Eb Major

Ab Major

Musical notation for Eb Major and Ab Major scales in bass clef, 4/4 time. Eb Major starts on Eb2, Ab Major starts on Ab2. Both are one octave ascending and descending.

Db Major

Gb Major

Musical notation for Db Major and Gb Major scales in bass clef, 4/4 time. Db Major starts on Db2, Gb Major starts on Gb2. Both are one octave ascending and descending.

B Major

E Major

Musical notation for B Major and E Major scales in bass clef, 4/4 time. B Major starts on B2, E Major starts on E2. Both are one octave ascending and descending.

A Major

D Major

Musical notation for A Major and D Major scales in bass clef, 4/4 time. A Major starts on A2, D Major starts on D2. Both are one octave ascending and descending.

G Major

C Major

Musical notation for G Major and C Major scales in bass clef, 4/4 time. G Major starts on G2, C Major starts on C2. Both are one octave ascending and descending.

Tuba

Range-Based Flexibility Exercise

Level 1 ♩ = 72-96

Level 2

Musical notation for Level 1 and Level 2 exercises. The notation is in bass clef with a key signature of one flat (B-flat) and a 4/4 time signature. Level 1 consists of two measures of quarter notes ascending from G2 to G3, followed by a half note G3 with a fermata. Level 2 consists of two measures of quarter notes ascending from G2 to G3, followed by a half note G3 with a fermata. A slur covers the first two measures of each level.

Level 3

Musical notation for Level 3 exercise. The notation is in bass clef with a key signature of one flat (B-flat) and a 4/4 time signature. It consists of a single measure of quarter notes ascending from G2 to G3, followed by a half note G3 with a fermata. A slur covers the entire measure.

Tuba

Brass Flexibility Exercises

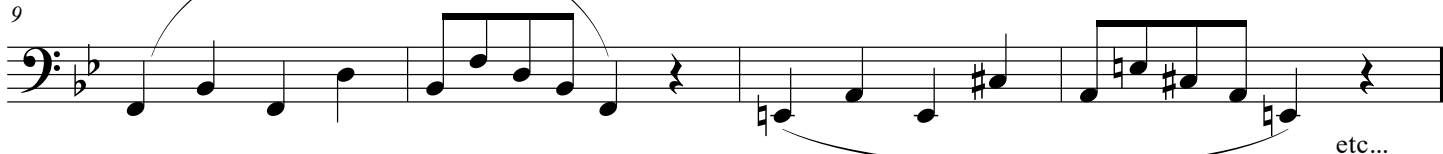
"2 Note"



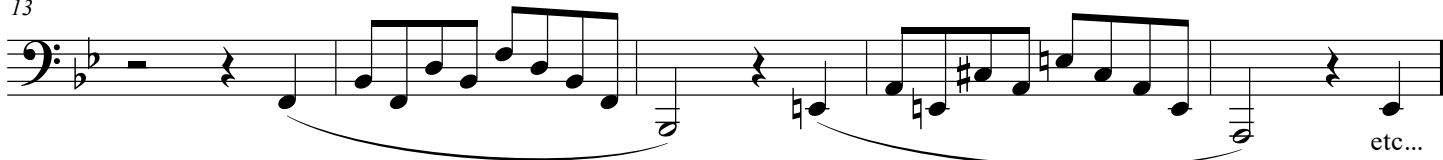
"3 note"



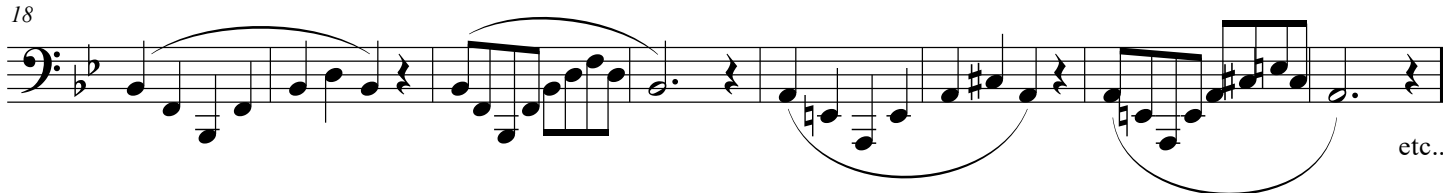
"4 Note"



"5 Note"



"7 note"



For these exercises, please perform down to the 4th sequence, and then back up the exercise...

Ex. Fingerings = Open - 2 - 1 - 1&2 - 1 - 2 - Open

Please perform the following two lines with a metronome at the fastest tempo that you can single tongue cleanly



Tuba

play to the end of the variation with which you are most comfortable

BJ Brooks
ASCAP

Moderato $\text{♩} = 80$ (suggested) Theme

Musical notation for the Theme, measures 1-7. The key signature is two flats (B-flat and E-flat), and the time signature is 4/4. The music is written in bass clef. The dynamic marking is *mf*. The notation includes a series of eighth and quarter notes, with a final measure ending in a double bar line.

8 Variation 1

Musical notation for Variation 1, measures 8-12. The key signature remains two flats, and the time signature is 4/4. The music is written in bass clef. The dynamic marking is *mf*. The notation includes a series of eighth and quarter notes, with a final measure ending in a double bar line.

13 Variation 2

Musical notation for Variation 2, measures 13-17. The key signature remains two flats, and the time signature is 4/4. The music is written in bass clef. The dynamic marking is *f* for the first measure, followed by *mf* for the subsequent measures. The notation includes a series of eighth and quarter notes, with a final measure ending in a double bar line.

18 Variation 3

Musical notation for Variation 3, measures 18-21. The key signature remains two flats, and the time signature is 4/4. The music is written in bass clef. The dynamic marking is *f* for the first measure, followed by *mp* for the subsequent measures. The notation includes a series of eighth and quarter notes, with a final measure ending in a double bar line.

22

Musical notation for Variation 3 continuation, measures 22-25. The key signature remains two flats, and the time signature is 4/4. The music is written in bass clef. The dynamic marking is *mf* for the first measure, followed by *p* for the subsequent measures. The notation includes a series of eighth and quarter notes, with a final measure ending in a double bar line.

26 Variation 4

Musical notation for Variation 4, measures 26-29. The key signature remains two flats, and the time signature is 4/4. The music is written in bass clef. The dynamic marking is *mp*. The notation includes a series of eighth and quarter notes, with a final measure ending in a double bar line.

30 Variation 5

Musical notation for Variation 5, measures 30-34. The key signature remains two flats, and the time signature is 4/4. The music is written in bass clef. The dynamic marking is *mp*. The notation includes a series of eighth and quarter notes, with a final measure ending in a double bar line.

35

Musical notation for Variation 5 continuation, measures 35-38. The key signature remains two flats, and the time signature is 4/4. The music is written in bass clef. The dynamic marking is *mp*. The notation includes a series of eighth and quarter notes, with a final measure ending in a double bar line.